

# DATIM Version 1.25 Upgrade

## Release Notes

DATIM has been updated to the DHIS2 2.29 version and includes several improvements and new features, which are detailed in the Release Notes below. These notes highlight features which will be most relevant to DATIM users.

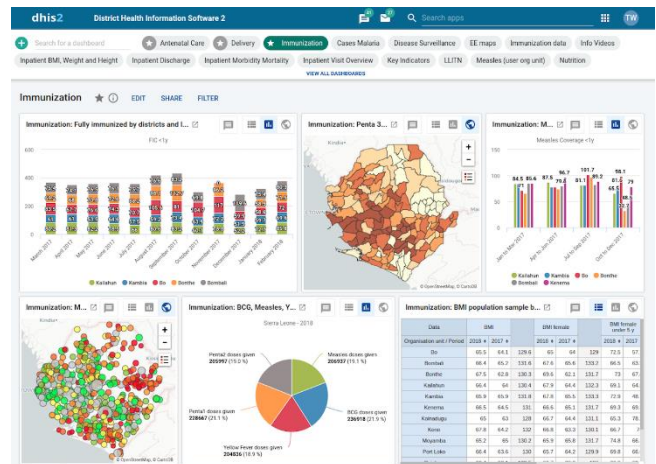
These release notes are based on the official DHIS2 2.29 release notes published by the University of Oslo. If you want to read up on all of the new features you can view them here for versions [2.28](#) and [2.29](#).

**Remember to clear your browser cache when you first log in to ensure that features are updated!**

## DHIS2 2.29 Analytics Features

### Dashboards

A new dashboard app is now available which lets you arrange the dashboard items in a completely flexible way. It features a better dashboard search, allows you to create shortcuts by marking dashboards as favorites, switch between visualization types such as pivot, chart and map and insert free-text items. Review the [Dashboard Quick Guide](#) for more details.



The screenshot shows a pivot table in DHIS2. The table has columns for 'CPV2 doses given' and 'CPV2 doses given'. The table data is as follows:

CPV2 doses given	CPV2 doses given
5,832	5,832
2,208	2,208
3,715	3,715
11,756	11,756
4,039	4,039
4,039	4,039
4,113	4,113
4,113	4,113
4,018	4,018
4,018	4,018
23,525	23,525

### Pivot Table Scalability

The pivot table now allows for very large pivot tables to be viewed and downloaded in the web browser. This is accomplished through progressive rendering, i.e. the browser will only render what you currently see and not load the entire pivot table into the browser memory.

## Filter pivots based on values

Pivot table app now supports measure criteria, meaning criteria can be apply to the data being returned, such as a min and max value. This is enabled in the *Options* dialog.

Period Date	ANC 1st visit	ANC 2nd visit	ANC 3rd visit	Concomitant Migration	Concomitant Missed	Concomitant Coverage	Total
October 2016	14 345	3 561	1 797	3 348	110 097	302 730	315 623
November 2016	14 899	4 982	15 278	4 175	128 639	327 480	327 714
December 2016	13 390	3 350	12 205	2 799	146 050	345 384	346 147
January 2017	15 228	4 792	13 188	4 212	127 846	328 111	328 090
February 2017	14 645	4 817	13 888	4 892	138 656	308 262	308 143
March 2017	14 222	4 896	13 998	4 433	139 961	309 262	309 122
April 2017	17 384	4 523	14 423	4 428	161 795	362 464	362 992
May 2017	24 228	5 226	19 287	4 439	188 429	387 139	388 091
June 2017	18 897	4 428	19 262	4 997	192 260	393 714	393 223
July 2017	17 677	4 479	18 624	4 512	187 298	389 298	387 947
August 2017	17 623	4 261	18 396	4 147	188 864	395 849	391 119
September 2017	17 140	4 488	18 075	4 967	197 423	398 799	398 517
Total	189 814	52 425	184 324	49 911	2 436 123	5 944 760	5 946 612

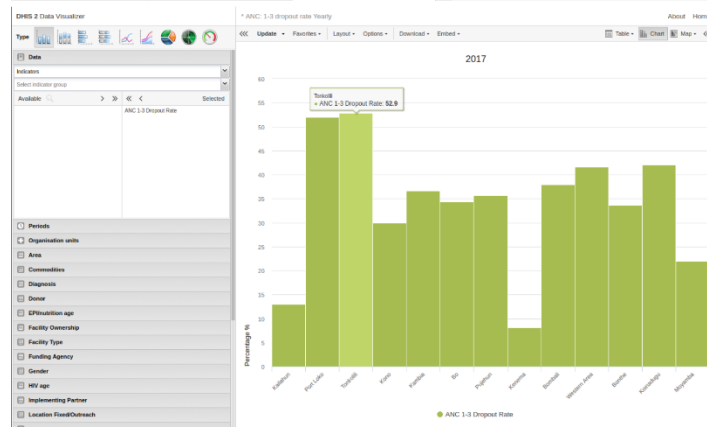
## Combine Totals and Details in Pivots

Total values and details (operands) can now be combined in pivot tables and charts.

## Indicator Totals in Pivots

The pivot table app now calculates total and subtotal values in a better way, dividing the sum of numerator values with the sum of denominator values multiplied by the average of indicator factors.

Area	ANC 1 Coverage	ANC 2 Coverage	ANC 3 Coverage	ANC IPT 1 Coverage	ANC IPT 2 Coverage	Total
CHCP	75.2	72.6	69	78.6	82.4	78.4
CHC	105.5	36.9	126.2	140.3	105.6	134.7
Health	121.2	214.6	124.6	151.8	140.9	91.4
MCHP	61.7	66	96.9	84.3	82.2	80.5
CHC	0	0	0	0	0	0
CHC	60.8	89.4	126.4	90.7	93.8	84.4
CHC	50.2	75.3	104.0	87.0	79.1	48.3
CHCP	137.9	86.3	195.2	182.2	188.2	117.8
MCHP	138.8	91.9	127.3	126.3	126.3	103.5
CHC	0	0	0	0	0	0
Health	26.8	51	32.1	28.9	34.8	22.9
CHC	171	134.7	176.9	166.1	154.9	125.6
CHC	187.0	76.5	124.2	182.7	97.5	88.8
CHCP	29.0	37.5	71	68.8	58.7	51.2
MCHP	24.9	70.3	57.7	67.1	64.9	54.9
CHC	45.9	0	23.3	21.9	22.9	32.3
Health	0	102.2	89.3	0	79.6	0
CHC	21.1	54.9	89.7	61.8	50.9	33.2
CHP	109.9	95.3	85.3	91.1	87.8	88.9
MCHP	104	98.4	107.4	89.4	89.6	87.4
CHC	109.3	126	171.9	130.7	149.5	132

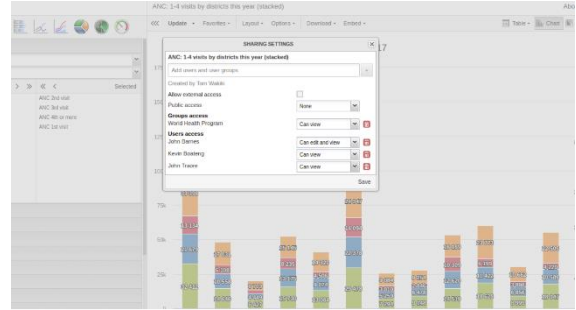


## Remove Gaps in Bar/Column Charts

Data visualizer and event visualizer apps now support an option for displaying bar/column charts without gaps between the bars/columns. This feature can be enabled in the *Options* dialog.

## Share Favorites with specific Users

Analytics favorites can now be shared with individual users in addition to user groups. This is useful for more flexible sharing and removes the need for always creating a group.



OPEN FAVORITE				July 2017	August 2017	See
NAME	CREATED	LAST UPDATED	Filter	Created by me		
ANC: ANC 1st and 2nd visits at facilities with hierarchy	2017-05-19, 16:35	2017-05-11	Created by me	34	20	189
ANC: ANC 1 Visits Cumulative Numbers	2012-11-13, 18:33	2017-05-18, 15:52	Created by others	132	2 900	2 536
ANC: ANC at facilities in Do this month with hidden empty columns	2017-05-19, 17:10	2017-05-09, 10:55		109	2 791	247
ANC: ANC by area last 12 months	2017-05-19, 17:59	2017-05-18, 16:02		103	1 371	1 462
ANC: ANC visits 1-3 last 12 months	2016-10-12, 13:39	2017-05-09, 06:50		62	5 743	6 131
ANC: ANC visits by facility type	2016-10-11, 09:40	2017-05-15, 16:02		30	1 592	1 037
ANC: By Facility Type	2012-11-13, 18:33	2017-05-18, 16:02		5	18	27
ANC: Coverages and reporting by region last year	2014-04-03, 14:13	2016-08-08, 11:35		139	2 095	2 234
ANC: Coverages and reporting by region last year 2	2016-08-08, 11:35	2016-08-08, 11:35		89	163	260
ANC: Data by location, districts last 4 quarters	2014-03-05, 05:34	2015-07-15, 15:25		161	629	1 703
ANC: Data by location, type and districts this year	2014-03-05, 05:33	2017-05-18, 16:02		145	1 234	1 233
ANC: Data by location, type last 12 months	2014-03-05, 05:32	2017-05-18, 16:02		140	140	76
ANC: Data by province	2014-03-05, 18:21	2015-07-15, 15:25		139	2 428	1 803
ANC: District Maternal Health	2012-11-13, 18:34	2015-07-15, 15:25		112	309	309
ANC: Indicators by districts last 4 quarters	2014-03-05, 05:35	2016-08-05, 18:45		136	5 280	4 174
ANC: Key indicators last 12 months	2013-11-07, 12:39	2015-07-15, 15:25		231	143	88
ANC: TT doses by location and pregnant status	2013-05-28, 18:21	2015-07-15, 15:25		119	1 688	965
ANC: Visits by sex unit	2012-11-13, 18:33	2015-07-15, 15:25		84	929	415
AMT: AMT stage by implementing partner	2015-08-09, 12:36	2015-08-09, 12:36		3	23	37
Child Health: BCG, Vit A and RIM cases by districts	2015-12-13, 12:52	2015-12-13, 12:53		72	508	37
Child Health: Immunization doses given (tracker)	2017-03-13, 21:49	2017-03-13, 21:49		88	782	540
Prevention: Child health consultation districts last 4 quarters	2014-04-19, 19:15	2015-07-15, 15:25		164	1 166	961

## Favorite Filter for “Created By Me”

You can now easily filter your favorites with the new “Created by me”/”Created by others” filter, available in all the analytics apps.

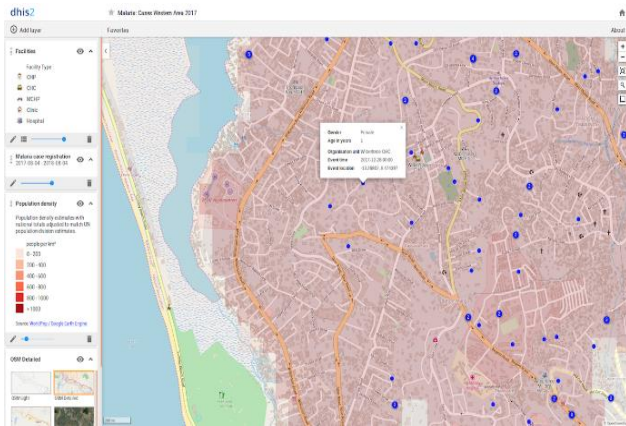
## Sort Favorites by Created and Last Updated

Analytics favorites can now be sorted by the date they were created and the date they were last updated.

OPEN FAVORITE				Filter	Show all	
NAME	CREATED	LAST UPDATED				
ANC: ANC visits and commodities	2017-10-09, 15:55	2017-10-09, 15:55				323
Immunization: Data for NQOL, mission and public (measure criteria)	2017-10-09, 14:03	2017-10-09, 14:03				341
Immunization: Coverage adjusted for reporting rate last 12 months	2017-05-30, 14:41	2017-05-30, 14:41				259
Immunization: Data by facility type and ownership (all options)	2017-05-30, 14:33	2017-05-30, 14:33				301
IDSR: Disease Week (Weekend only) 1-12 Sierra Leone	2017-05-30, 14:30	2017-05-30, 14:30				331
IDSR: Disease Week 1-12 Sierra Leone	2017-05-30, 14:29	2017-05-30, 14:29				362
Immunization: Percentages by facility type this year	2017-05-30, 14:14	2017-05-30, 14:14				331
HIV: HIV counselling at facility level (risk empty columns)	2017-05-30, 09:48	2017-05-30, 09:48				352
Commodities: Commodities last 12 months row percentage	2017-05-19, 18:01	2017-05-19, 18:01				351
Diseases: Diseases incidence and Prevalence 1 coverage with legend set by sex	2017-05-19, 17:15	2017-05-19, 17:15				301
ANC: ANC at facilities in Do this month with hidden empty columns	2017-05-19, 17:10	2017-05-19, 17:10				393
ANC: ANC 1st and 2nd visits at facilities with hierarchy	2017-05-19, 16:35	2017-05-19, 16:35				341
ER: Emergency report Result vs Target Rural and Urban with legend	2017-05-19, 16:03	2017-05-19, 16:03				351
ER: Emergency report Result vs Target Rural and Urban	2017-05-19, 16:02	2017-05-19, 16:03				351
ER: Emergency response Result vs Target with legend	2017-05-19, 15:44	2017-05-19, 15:44				351
ER: Emergency response Result vs Target last 4 quarters	2017-05-19, 15:40	2017-05-19, 15:40				351
HIV: 3. Care data at district	2017-03-14, 18:41	2017-03-14, 18:41				351
HIV: 3. Care data quarterly at facility	2017-03-14, 18:37	2017-03-14, 18:39				351
Child health: Immunization doses given (tracker)	2017-03-13, 21:49	2017-03-13, 21:49				351
HIV: 4. Care data indicators at district	2017-03-13, 19:46	2017-03-14, 18:39				351
Maternal: Maternal case count last 14 days by districts	2017-01-27, 12:59	2017-01-27, 12:59				351

## Multiple Regression Types in Charts

Data visualizer and event visualizer apps now supports a new option for linear, polynomial and loess regression types (trend lines). Can be enabled in the *Options* dialog.



## Maps App

A new Maps app is available, replacing GIS, offering a new, intuitive and user-friendly interface for creating map layers. It lets you arrange the order of map layers in a simple way, and view the map data in a data table. Any number of map layers can be added to a map, even layers of the same type. The contents and order of map layers can be viewed in the left side menu. Please note that with the feature update, the GIS App will no longer be available. Please use the new Maps App for analysis.

## User Admin App Updates

The User Admin App has been updated as part of the DATIM 1.25 Upgrade. We have created a video tutorial that demonstrates the new features and capabilities of the User Admin App. View the [User Admin Support](#) page for details and a video overview of the changes to the application.

**\*\*Please Note:** Interagency users will **no longer be able to invite Agency users** to DATIM. This is a result of the upgrade to DHIS2 2.29, which prevents user administrators from inviting other users who have permissions that they themselves do not. Note that Interagency users were already unable to **edit** Agency users (for the same reason mentioned), and that this change now includes **inviting** users in that restriction.

Additionally, please note the following changes:

### 1. Added 2 New Data Streams

- Expenditure Reporting (ER)
- Surveys and Surveillance (SaS)

\*Please note these streams are coming soon but User Administrators are able to create users for these two streams now.

### 2. Removed 2 Data Streams

- SIMS Key Populations
- Expenditure Analysis (EA)

## **Additional Updates**

1. **Swaziland is now Eswatini in DATIM:** Swaziland will be updated to Eswatini within the organizational hierarchy. This change will only happen at the Country level; any references to Swaziland in the hierarchy will be updated by the in-country site administrators.