



## DATIM Version 1.30: Upgrade Release Notes

DATIM has been updated to DHIS2 version 2.33 and includes several app improvements, new features, and bug fixes which are detailed in the Release Notes below. These notes highlight the features that will be most relevant to DATIM users.

These release notes are based on the official DHIS2 version 2.33 release notes published by the University of Oslo. If you are interested in learning more about DHIS2 version 2.33, you can view more information at [the DHIS 2.33 Overview page](#).

**Remember to clear your browser cache when you first log in to ensure that features are updated!**

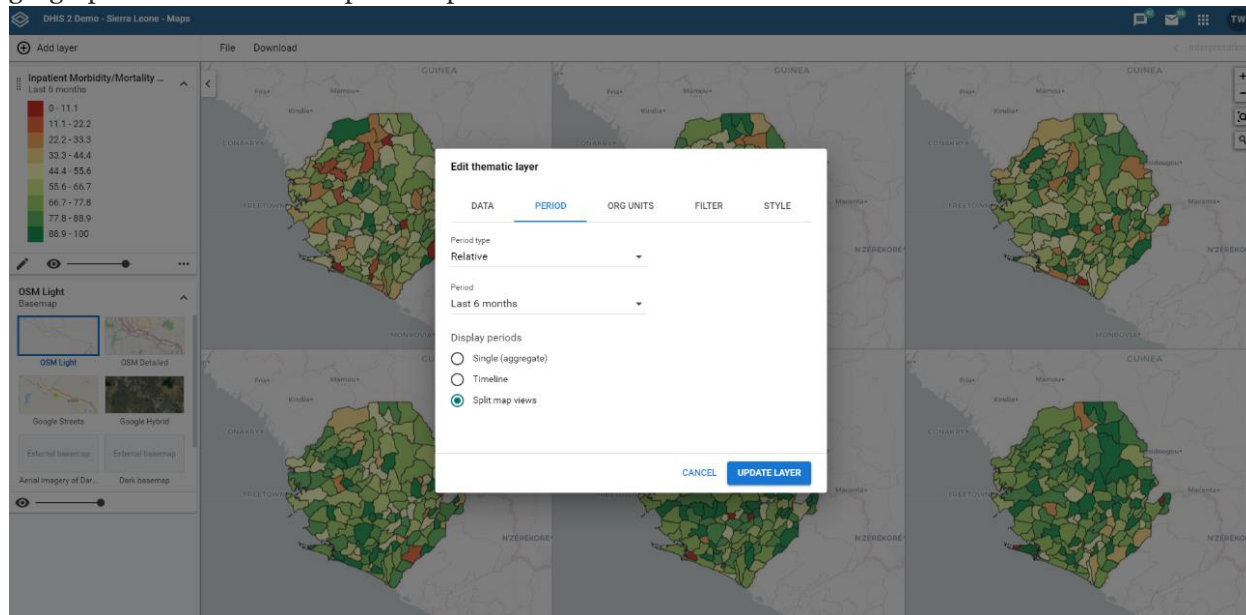
### DHIS2 2.33 Analytic Application Features

DHIS2 version 2.33 introduces several updates to the native analytic applications you can access within DATIM.

#### Maps Application: Multiple maps and timelines

In the Maps application, you can now render multiple maps in the same screen to show how the data has evolved over time. You can also have a single map, which can “play” the changes to data on a timeline to show the change over time. This could be useful to show how an outbreak is spreading over time, or how coverage of a service changes over time.

These two new maps types are called “split view” and “timeline” maps, offering new ways to view geographical data over multiple time periods.

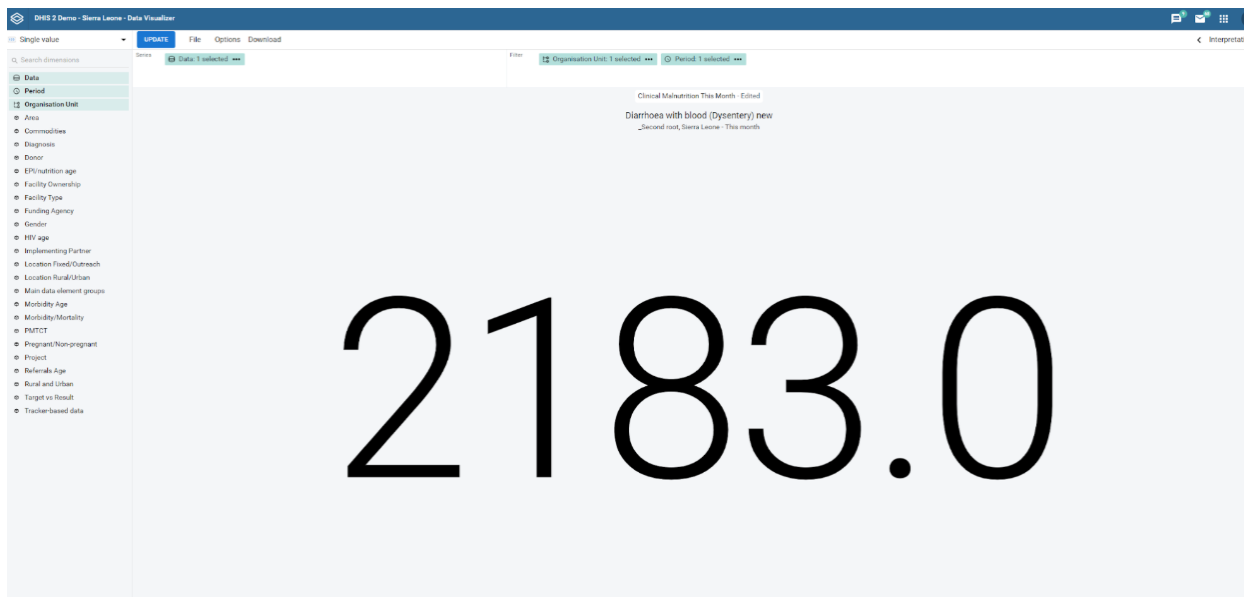
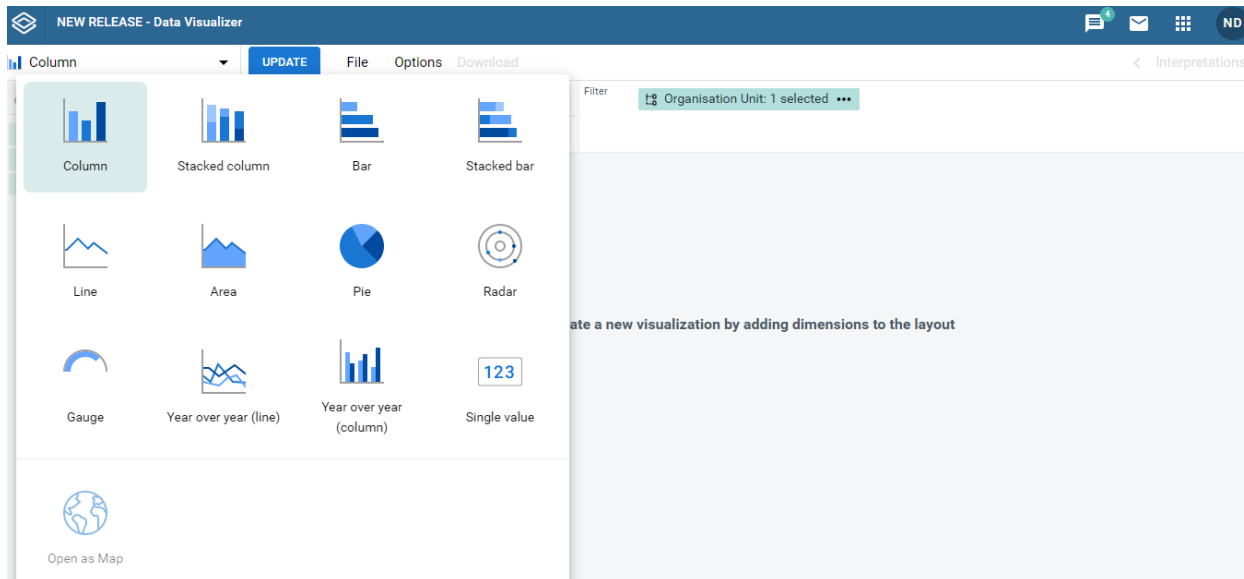




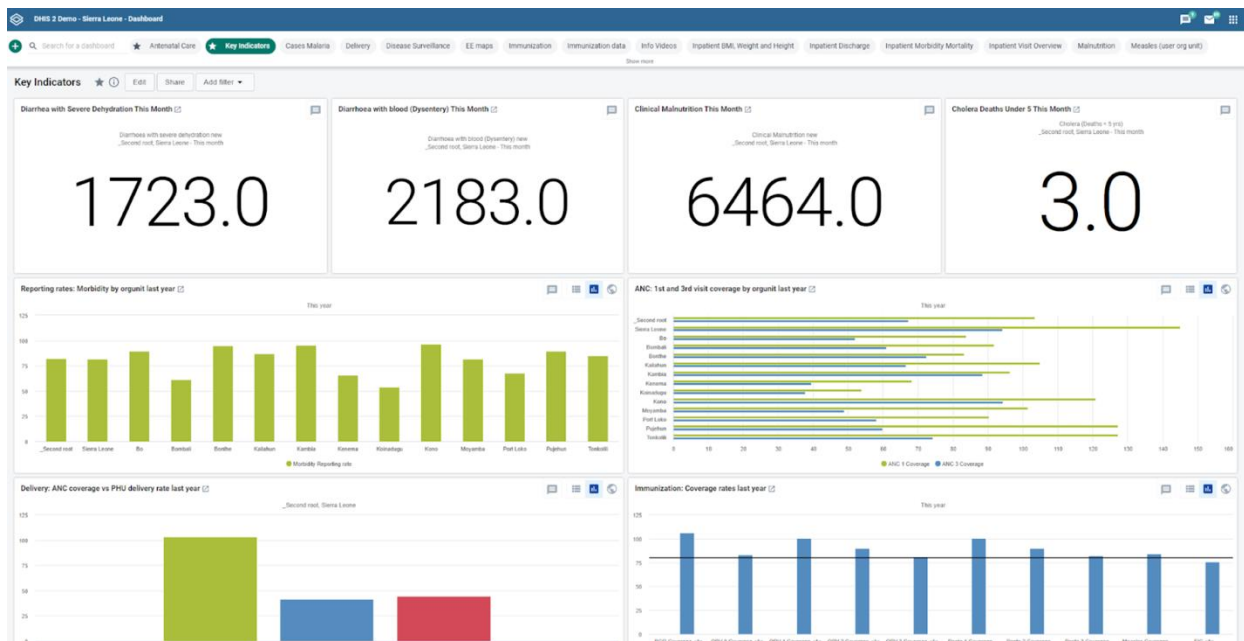
## Data Visualizer application: Single value charts and dashboard items

You can now render a single aggregated value in Data Visualizer. This simple visualization displays a single value that can be saved and added to the dashboard. This allows for a dashboard item that provides essential information at a glance, such as the number of new cases.

The screen shot below displays the look and feel of the Data Visualizer app. Updates made to the data visualizer in DHIS2 version 2.33 include improvements to chart titles as well as a new chart type, the single value chart.



2183.0



## Updates to the Event Reports application

Currently, Evaluation SOP uses the Event Reports app to visualize data. This app has added several new features.

### Table Style

Upon opening the Event Reports app, the first option to configure a report is a drop-down menu labeled “Table Style”. Most DATIM users are familiar with the “Line List” option on this “Table Style” menu, and should select it accordingly, rather than leaving it as the default “Pivot Table”.

### Date Analysis

The Event Reports app can now be used to show enrollment dates and incident dates as well as event program stage dates. It can also show the description of these dates instead of just “Event date”. This can be configured in the program, e.g. as “Date of visit” or “Date of evaluation”.



The screenshot displays the DHIS 2 Event Reports interface. On the left, the 'Table style' configuration is visible, showing 'Pivot table' as the selected style and 'Enrollment' as the output type. The 'Data' dimension is selected, and the 'Available' list is currently empty. Below the configuration are sections for 'Periods', 'Organisation units', and various 'Facility Implementation Prioritization Set' and 'Planning Prioritization Set' options. The right pane, titled 'Untitled', provides instructions for creating and working with an event report, including steps like selecting items from dimensions, clicking 'Layout' to arrange dimensions, and using 'Update', 'Favorites', 'Options', and 'Download' buttons.

## Data Capture App Features

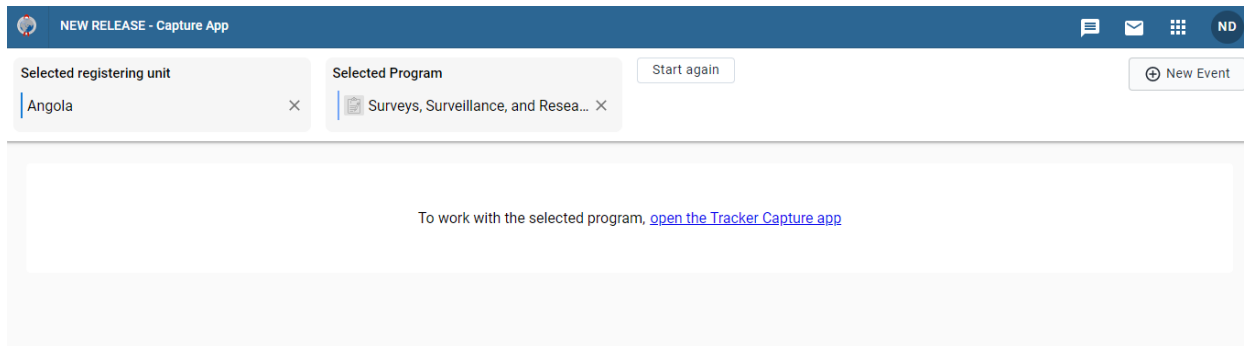
Data entry for most DATIM data streams (MER, ER, and SaSR) will remain the same in DHIS2 version 2.33. However, DHIS2 version 2.33 introduces changes to the Evaluation SOP data stream.

### Capture app

The Evaluation SOP data stream has moved from the Event Capture app to the Capture app. This new version has a different look and feel, but the functions remain the same.

The screenshot shows the 'NEW RELEASE - Capture App' interface. It features a top navigation bar with a 'NEW RELEASE - Capture App' title and several utility icons. The main content area is divided into two panels. The left panel, titled 'Registering Organisation Unit', contains a search box and a tree view of organizational units, including 'Global', 'Africa', 'Americas', 'Asia', and 'Europe'. The right panel, titled 'Program', contains a 'Select program' dropdown menu with a list of programs: 'Adherence Checklist', 'COP Evaluation Plans', 'COP Planned Evaluation Inventory', 'Evaluation Inventory', 'SOP Program', and 'Surveys, Surveillance, and Research'. A 'New' button is located in the top right corner of the program selection area.

For users with access to Surveys, Surveillance, and Research Tracking (SaSR), you may notice that SaSR is available to select in the new Capture app. However, SaSR data entry should still be managed in the Tracker Capture application. If you select SaSR in the Capture app, it will direct you to select and open the Tracker Capture application to begin collecting SaSR data.

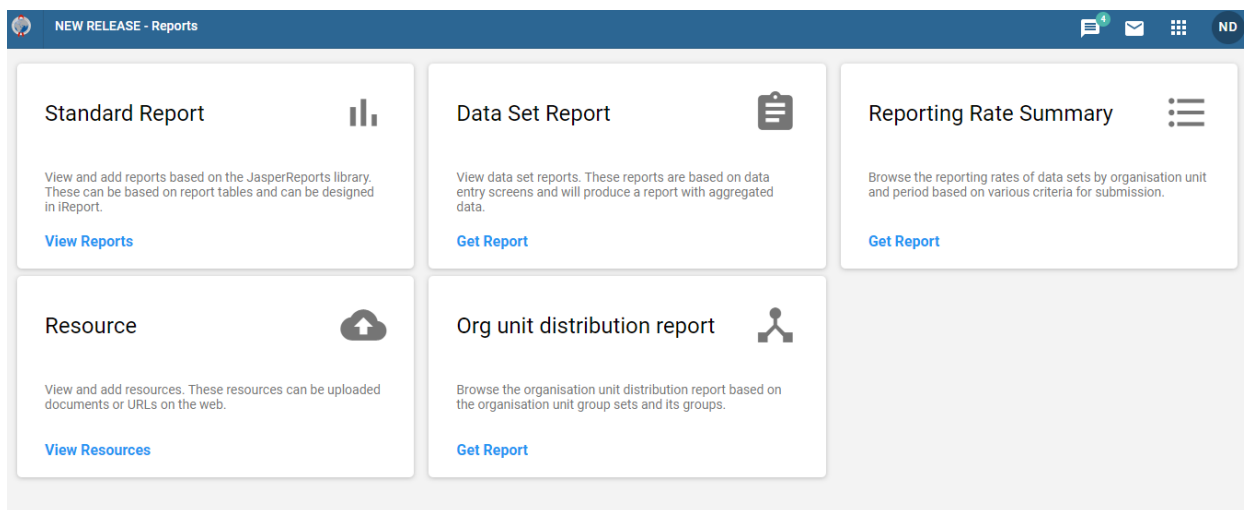


## Other DHIS2 App Features

### Reports app

The Reports app has been completely replaced in DHIS2 version 2.33 and comes with several improvements. As an example, standard reports are now linkable and can be opened from a URL. The old reports module has been removed. For those users with access to the Reports application, the buttons may look different, but they function the same.

The screen shot below displays the look and feel of the new Reports app introduced in DHIS2 version 2.33. This app completely replaces the reports app found in previous versions of DHIS2.



## Security & Performance Enhancements

A number of security and performance enhancements will be incorporated into DATIM as part of the DHIS2 2.33 upgrade. We highlight two below:

### Single emails sent for creation of new accounts



In previous DHIS2 versions, two emails were sent to a user to create a new account. This caused confusion, and some email providers would filter out one of the emails. In DHIS2 version 2.33, a single email will be sent to DATIM users to prompt them to create their new account.

### **Analytics Table process improvement**

A background process of generating analytics tables must be run in DHIS2 in order to make data entered into a data entry screen available for querying by analytic applications. DHIS2 version 2.33 introduces some improvements in efficiency and performance in the length of time it takes for these tables to be generated throughout the day.